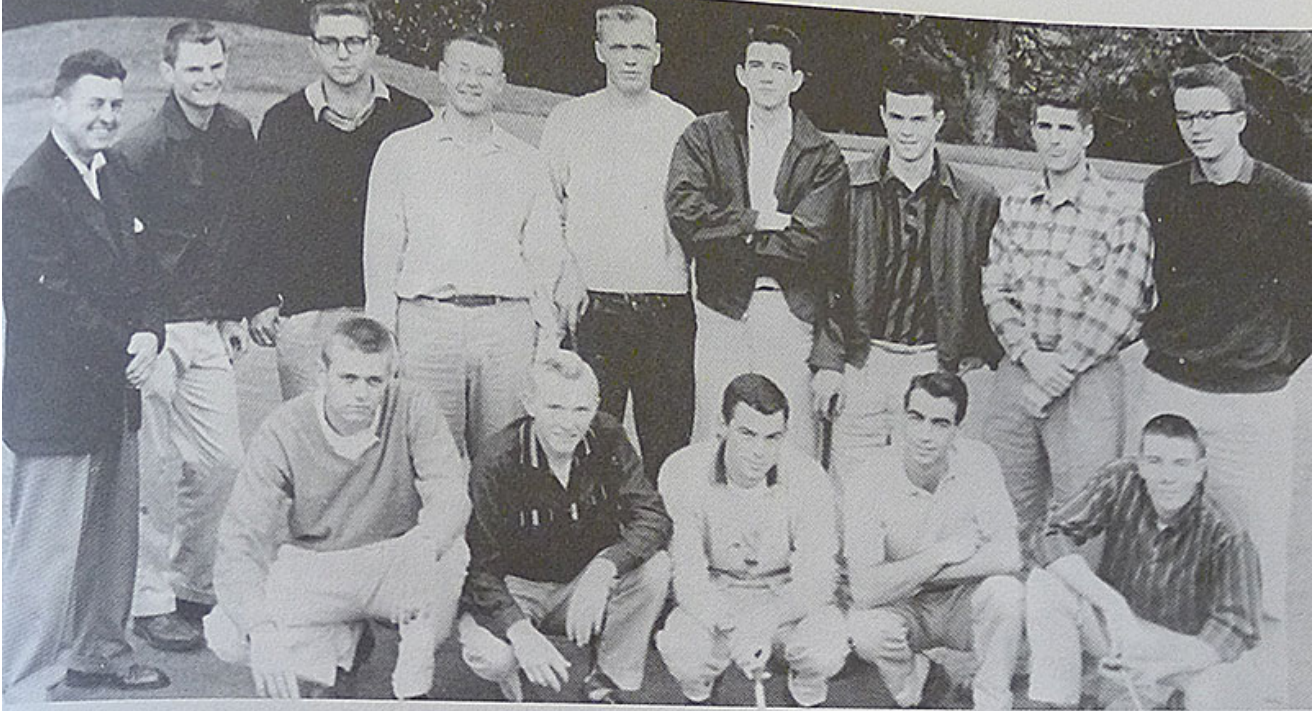


LEFT TO RIGHT, ROW ONE: Bill Boutell, Bill Seanor, Dick Albers, Ron Luceti, Dave Diffenderfer. ROW TWO: Coach Bud Finger, Alf Burtleson, Bill Baker, Bob Bither, Bernie Magnussen, Tom Quinn, Gary Harmon, Pete Lauritzen, Rusty Simpson.



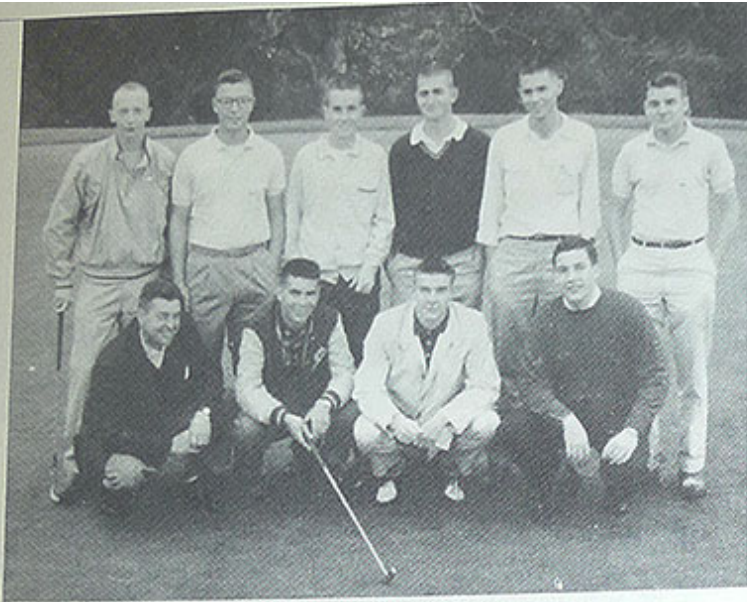
A decisive $20\frac{1}{2}$ - $6\frac{1}{2}$ victory over the Peninsula Country Club got the 1957 season off to a good start for Coach Bud Finger's linksmen. The card golf squad rolled over San Francisco State and the Sunnyside Country Club of Fresno by scores of 19-8 and $24\frac{1}{2}$ - $2\frac{1}{2}$ in other early season matches. Leading the Cards were juniors Burtleson and Lucetti, whose cards of 68-71-73 were tops for the team. Rounding out the first six were promising sophomore Seanor, juniors Rowley and Albers, and the lone senior, Diffenderfer. Reich, Lawrence, and Magnussen all showed signs of breaking into the select group on the eve of the Cal match.

Alf Burtleson

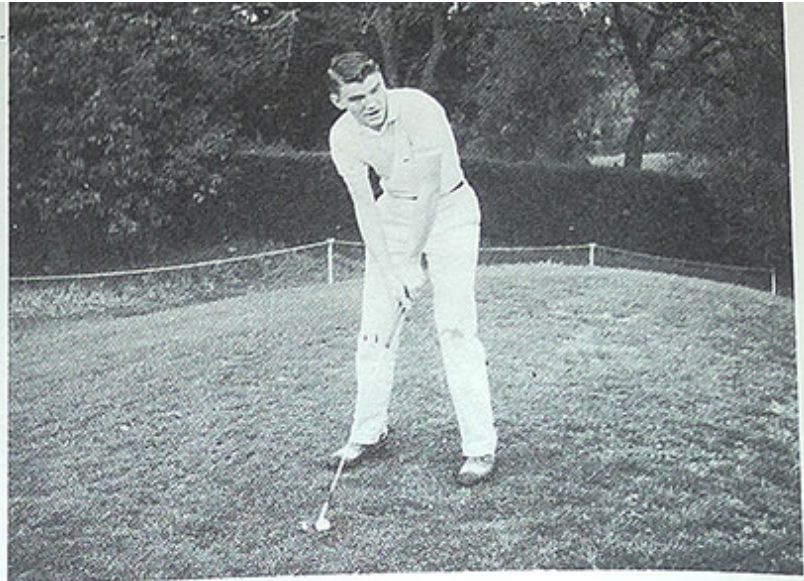


Bill Seanor





LEFT TO RIGHT, ROW ONE: Coach Bud Finger, Mike Shanahan, Sam Haynes, Ren Fowler. ROW TWO: Russ Coombs, Lee McGuire, Phil Underwood, Kent Frates, Jim Petit, Steve Smith.



Steve Smith, one of the West's most promising golfers, steadies himself for a practice chip.

Golf

Coach Bud Finger's frosh golf squad edged Menlo JC 14-13, in one of the yearlings' closest matches in years. Midway through the season the freshmen had added more victories to a winning streak of some 180 straight matches starting in 1937. McGuire and Shanahan were the leading medalists for the golfers, playing consistently in the low 70's.